

# International services postage guide (including GST)

Rates effective from 1 September 2015






# Which service should I use?

New Zealand Post has a range of flexible international delivery services designed to meet your needs.

## International postal services

Category	<div>International Par Avion </div>	
Description	<ul style="list-style-type: none"><li>Worldwide letter and parcel service to over 220 destinations<sup>1</sup></li><li>Prompt delivery</li></ul>	
Delivery target	3–10 working days <sup>2</sup>	
P0 Box delivery	Yes	
Online tracking	No	
Signature on delivery	No	
Size restrictions	Maximum length + girth = 2m <sup>3</sup> . Maximum length of any side = 1.05m <sup>3</sup> .	
Weight restrictions	<b>Minimum</b> – 200g. <b>Maximum</b> – 20kg <sup>4</sup> .	
Charging by weight	Charged by actual weight	
Lodgement options	<ul style="list-style-type: none"><li>PostShop stores and selected New Zealand Post retail outlets (excluding stamp resellers)</li><li>Pick up from commercial premises may be available for New Zealand Post Account customers</li></ul>	
Consignment note used for parcels	<ul style="list-style-type: none"><li>Green customs declaration (OS008a) – for parcels under 2kg and under NZ\$250</li><li>White consignment note (CN300) available instore only, or red business consignment note (OS007) – for parcels over 2kg and/or over NZ\$250</li></ul>	
Contents value restriction and Compensation Cover <sup>6</sup>	<b>Consumer</b>	The disclosed value <sup>7</sup> , provided: <ul style="list-style-type: none"><li>it is under \$2000</li></ul>
	<b>Business with New Zealand Post Account</b>	The disclosed value <sup>7</sup> , provided: <ul style="list-style-type: none"><li>it is under \$250; or</li><li>if it is between \$250 and \$2000, Additional Compensation Cover has been purchased and the disclosed value<sup>7</sup> does not exceed \$2000</li></ul>
	<b>Business without New Zealand Post Account (or with one but not using a business consignment note)</b>	The disclosed value <sup>7</sup> , provided: <ul style="list-style-type: none"><li>it is under \$250</li></ul>

1 For the latest destination list please refer to our website [www.nzpost.co.nz/worldzones](http://www.nzpost.co.nz/worldzones), call our International Courier Support Centre on 0800 73 63 53, or visit your nearest PostShop or selected New Zealand Post retail outlets (excluding stamp resellers). International Courier is only available to key destinations. The destination list contained in this brochure is current at the time of printing but is subject to change. An up-to-date destination list is available on our website [www.nzpost.co.nz/ic](http://www.nzpost.co.nz/ic).

2 You can expect that items will usually arrive at their destination within the timeframe specified for each service. Because we do not directly control all parts of the delivery chain, we cannot guarantee that your item will always reach its destination within the delivery target. Delivery to areas outside major cities, or where your item is dutiable or held in Customs, may take longer.

3 Maximum size restrictions: For parcels 2kg or less: maximum length + width + thickness = 900mm; the maximum length of any side = 600mm. For a roll or tube: (diameter x 2) + maximum length = 1,040mm; the maximum length of any side = 900mm. If your parcel is under 2kg but exceeds the maximum dimensions for parcels under 2kg, use the above 2kg parcel instructions.


4 Note that maximum weights are less for some countries. If your item weighs over 20kg you must use either International Courier or International Express Courier or if your item weighs over 30kg or is oversized please visit [www.nzpost.co.nz/oversized](http://www.nzpost.co.nz/oversized) or contact our Customer Service Centre on 0800 501 501 to discuss international freight options.

5 Items in New Zealand Post International Courier bags will be charged at actual weight. To calculate volumetric weight (kg), measure the parcel's height (m) x length (m) x depth (m) and multiply this by 200, e.g. (0.5m x 0.4m x 0.3m) x 200 = 12kg.

6 This limit is subject to a number of important limitations and exclusions, in particular in relation to Restricted and Prohibited items. For further information about our compensation terms and conditions and Restricted and Prohibited items, please refer to the relevant sections of the Postal Users' Guide, our website at [www.nzpost.co.nz/compensation](http://www.nzpost.co.nz/compensation) or call our Customer Service Centre on 0800 501 501.

7 The "disclosed value" is the value you disclose on the customs declaration form or consignment note, when sending internationally.

International courier services


Category	<div>International Courier</div>	
Description	<ul style="list-style-type: none"><li>A document and merchandise courier service to 46 key destinations</li><li>Ideal where cost is more important than speed</li><li>Delivery to door</li></ul>	
Delivery target	2–6 working days <sup>2</sup>	
PO Box delivery	Available to selected destinations only <sup>1</sup>	
Online tracking	Yes	
Signature on delivery	Yes	
Size restrictions	Maximum length + girth = 3m. Maximum length of any side = 1.5m.	
Weight restrictions	<b>Minimum</b> – documents 250g, merchandise 500g. <b>Maximum</b> – 30kg <sup>4</sup>	
Charging by weight	Charged by actual weight	
Lodgement options	<ul style="list-style-type: none"><li>PostShop stores and selected New Zealand Post retail outlets (excluding stamp resellers)</li><li>Pick up from commercial premises may be available for New Zealand Post Account customers</li></ul>	
Consignment note used for docs and parcels	<ul style="list-style-type: none"><li>White consignment note (CN300) available instore only, or orange business consignment note (IEC001)</li></ul>	
Contents value restriction and Compensation Cover <sup>6</sup>	<b>Consumer</b>	The disclosed value <sup>7</sup> , provided: <ul style="list-style-type: none"><li>it is under \$5000</li></ul>
	<b>Business with New Zealand Post Account</b>	The disclosed value <sup>7</sup> , provided: <ul style="list-style-type: none"><li>it is under \$2000; or</li><li>if it is between \$2000 and \$5000, Additional Compensation Cover has been purchased and the disclosed value<sup>7</sup> does not exceed \$5000</li></ul>
	<b>Business without New Zealand Post Account (or with one but not using a business consignment note)</b>	The disclosed value <sup>7</sup> , provided: <ul style="list-style-type: none"><li>it is under \$2000</li></ul>

1 For the latest destination list please refer to our website [www.nzpost.co.nz/worldzones](http://www.nzpost.co.nz/worldzones), call our International Courier Support Centre on 0800 73 63 53, or visit your nearest PostShop or selected New Zealand Post retail outlets (excluding stamp resellers). International Courier is only available to key destinations. The destination list contained in this brochure is current at the time of printing but is subject to change. An up-to-date destination list is available on our website [www.nzpost.co.nz/ic](http://www.nzpost.co.nz/ic).

2 You can expect that items will usually arrive at their destination within the timeframe specified for each service. Because we do not directly control all parts of the delivery chain, we cannot guarantee that your item will always reach its destination within the delivery target. Delivery to areas outside major cities, or where your item is dutiable or held in Customs, may take longer.

3 Maximum size restrictions: For parcels 2kg or less: maximum length + width + thickness = 900mm; the maximum length of any side = 600mm. For a roll or tube: (diameter x 2) + maximum length = 1,040mm; the maximum length of any side = 900mm. If your parcel is under 2kg but exceeds the maximum dimensions for parcels under 2kg, use the above 2kg parcel instructions.

International courier services

Category	<div>Express<i>International</i>Courier</div> 	
Description	<ul style="list-style-type: none"><li>Worldwide document and merchandise courier service to over 220 destinations<sup>1</sup></li><li>Ideal where speed is vital or items are of high importance</li><li>Customs clearance</li><li>Delivery to door</li></ul>	
Delivery target	1–5 working days <sup>2</sup>	
P.O. Box delivery	No	
Online tracking	Yes	
Signature on delivery	Yes	
Size restrictions	Maximum length + girth = 2m. Maximum length of any side = 1.05m.	
Weight restrictions	<b>Minimum</b> – 500g. <b>Maximum</b> – 30kg <sup>4</sup>	
Charging by weight	Charged at the greater of actual or volumetric weight <sup>5</sup>	
Lodgement options	<ul style="list-style-type: none"><li>PostShop stores and selected New Zealand Post retail outlets (excluding stamp resellers)</li><li>Pick up from commercial premises may be available for New Zealand Post Account customers</li></ul>	
Consignment note used for docs and parcels	<ul style="list-style-type: none"><li>White consignment note (CN300) available instore only, or black business consignment note (CN001)</li></ul>	
Contents value restriction and Compensation Cover <sup>6</sup>	<b>Consumer</b>	The disclosed value <sup>7</sup> , provided: <ul style="list-style-type: none"><li>it is under \$10,000</li></ul>
	<b>Business with New Zealand Post Account</b>	The disclosed value <sup>7</sup> , provided: <ul style="list-style-type: none"><li>it is under \$2000; or</li><li>if it is between \$2000 and \$50,000, Additional Compensation Cover has been purchased and the disclosed value<sup>7</sup> does not exceed \$50,000</li></ul>
	<b>Business without New Zealand Post Account (or with one but not using a business consignment note)</b>	The disclosed value <sup>7</sup> , provided: <ul style="list-style-type: none"><li>it is under \$2000</li></ul>

4 Note that maximum weights are less for some countries. If your item weighs over 20kg you must use either International Courier or International Express Courier or if your item weighs over 30kg or is oversized please visit [www.nzpost.co.nz/oversized](http://www.nzpost.co.nz/oversized) or contact our Customer Service Centre on 0800 501 501 to discuss international freight options.

5 Items in New Zealand Post International Courier bags will be charged at actual weight. To calculate volumetric weight (kg), measure the parcel's height (m) x length (m) x depth (m) and multiply this by 200, e.g. (0.5m x 0.4m x 0.3m) x 200 = 12kg.

6 This limit is subject to a number of important limitations and exclusions, in particular in relation to Restricted and Prohibited items. For further information about our compensation terms and conditions and Restricted and Prohibited items, please refer to the relevant sections of the Postal Users' Guide, our website at [www.nzpost.co.nz/compensation](http://www.nzpost.co.nz/compensation) or call our Customer Service Centre on 0800 501 501.

7 The "disclosed value" is the value you disclose on the customs declaration form or consignment note, when sending internationally.

# Letter and document and required postage<sup>1</sup>

International Air letters				
Size	(height x length x thickness)	Maximum weight	Australia & South Pacific	Rest of the world
Postcards & Aerogrammes	(130mm x 235mm)	10g	\$2.00	\$2.00
Medium	(130mm x 235mm x 10mm)	200g	\$2.00	\$2.50
Large	(165mm x 235mm x 10mm)	200g	\$2.50	\$3.00
Extra large	(230mm x 325mm x 10mm)	200g	\$3.00	\$3.60
Oversize	(260mm x 385mm x 10mm)	200g	\$3.80	\$5.40

International Air Registered Postage Included Bags				
A5	(185mm x 280mm)	200g	All zones	\$15.20

Flat rates are offered for international courier document services<sup>2</sup>.

Item weight	International Courier documents			International Express Courier documents <sup>3</sup>	
	250 grams minimum chargeable weight	500 grams	1.0kg	500 grams minimum chargeable weight	1.0kg
Australia (Zone A)	\$24.23	\$25.50	\$31.89	\$35.08	\$44.87
South Pacific (Zone B)	\$34.43	\$39.53	\$49.73	\$60.31	\$71.52
Asia (Zone C)	\$34.43	\$39.53	\$49.73	\$60.31	\$71.52
North America, UK & Europe (Zone D)	\$44.63	\$48.45	\$61.20	\$71.52	\$91.17
Rest of the world (Zone E)	\$44.63	\$48.45	\$61.20	\$71.52	\$91.17

1 The required postage rates include GST and apply if paying by stamps. The required postage is the value of postage required for an item to be carried by New Zealand Post. Actual price paid for postage included items may vary in-store. For New Zealand Post Account customers, the required postage in this book may differ slightly from the prices on invoices, due to rounding.

2 Over 1kg, the rates for merchandise and documents are the same. Refer to the parcel postage charts. The definition of a document is determined by the Customs authority in the destination country and can vary. If in doubt, please include an Export Invoice.

3 For the latest destination list please refer to our website at [www.nzpost.co.nz/worldzones](http://www.nzpost.co.nz/worldzones), call our International Courier Support Centre on 0800 73 63 53, or visit your nearest PostShop or selected New Zealand Post retail outlets (excluding stamp resellers). International Courier is only available to key destinations. The destination list contained in this brochure is current at the time of printing but is subject to change. An up-to-date destination list is available on our website [www.nzpost.co.nz/ic](http://www.nzpost.co.nz/ic).

# Merchandise (parcel) required postage

Required postage includes GST. GST is payable if postage is paid for by stamps. The required postage is the value of postage required for an item to be carried by New Zealand Post. Actual price paid for postage included items may vary in-store. For New Zealand Post Account customers, the required postage in this book may differ slightly from the prices on invoices, due to rounding.

Sending service Minimum chargeable weight	International Air 200 grams				International Courier 500 grams		International Express Courier 500 grams	
	up to 2kg		2kg+		All weights		All weights	
Item weight	per item	per kg	per item	per kg	per item	per kg	per item	per kg
Australia (Zone A)	\$6.22	\$11.19	\$11.82	\$8.40	\$26.78	\$8.61	\$42.04	\$15.43
South Pacific (Zone B)	\$8.71	\$18.65	\$18.03	\$14.00	\$44.63	\$14.34	\$75.73	\$23.86
Asia (Zone C)	\$9.33	\$24.87	\$21.77	\$18.65	\$44.63	\$19.14	\$75.73	\$31.54
North America, UK & Europe (Zone D)	\$9.71	\$28.80	\$24.14	\$21.59	\$44.63	\$21.59	\$75.73	\$34.68
Rest of the world (Zone E)	\$9.95	\$31.10	\$25.50	\$23.32	\$44.63	\$23.91	\$75.73	\$37.84

### Calculate the price to send your parcel<sup>1</sup>

sending service

per item rate

+

(

item weight

in kilograms

x

sending service

per kg rate

)

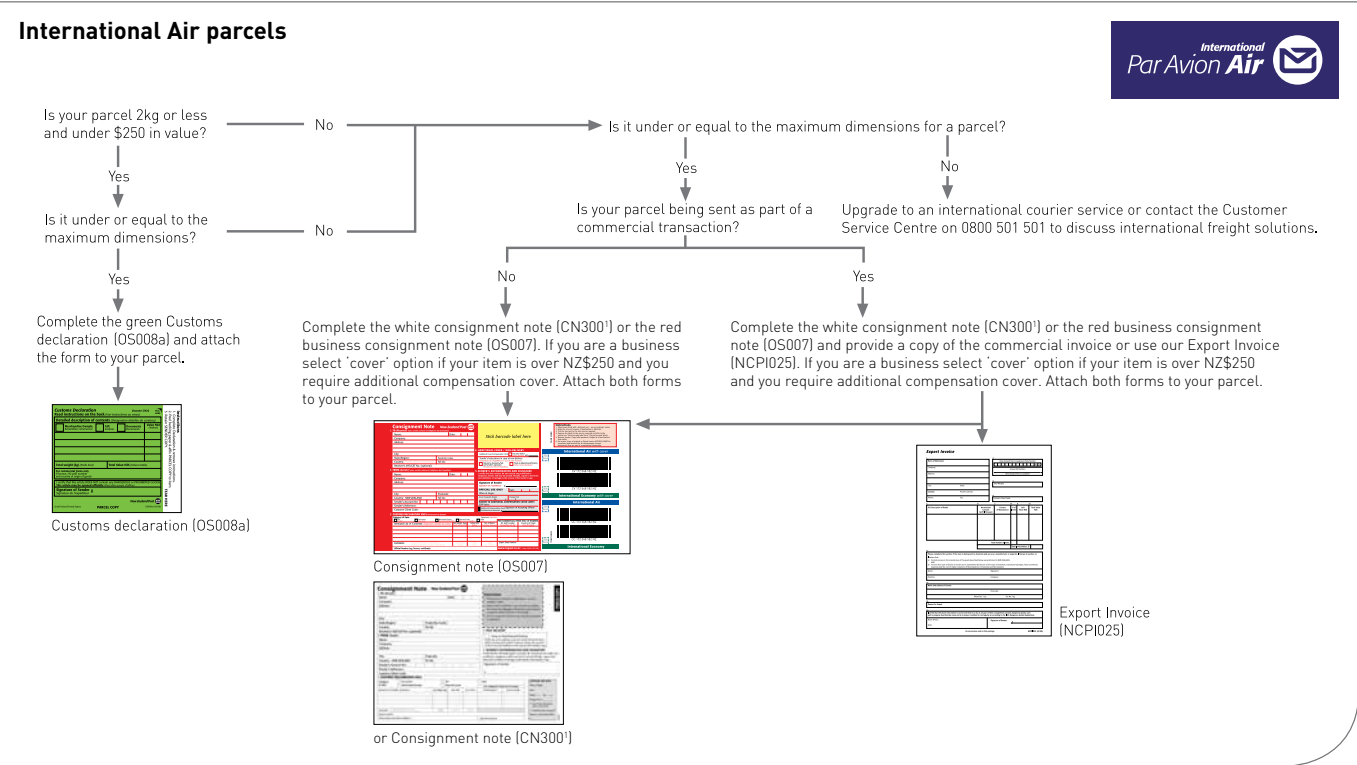
Multiply the weight of your item in kilograms, rounded up to the nearest 10 grams, by the per kg rate of the sending service you wish to use. Then add the sending service per item rate. For example, the cost to send a 0.503kg item to Australia by International Air is \$6.22 + (0.51kg x \$11.19) = \$11.93.

<sup>1</sup> Chargeable weight and volume are subject to confirmation by New Zealand Post. Please note that International Express Courier items will be charged on the greater of volumetric or actual weight (items in New Zealand Post International Courier bags will be charged at actual weight). Over 1kg, the rates for merchandise and documents are the same.

# Customs and consignment documentation

## International postal services

For parcels valued over NZ\$1,000, New Zealand Customs requires an export entry to be completed which New Zealand Post can complete on your behalf for an additional fee. Please call our Customs Clearance Broker on 0800 SEND IT (0800 73 63 48) for more information.



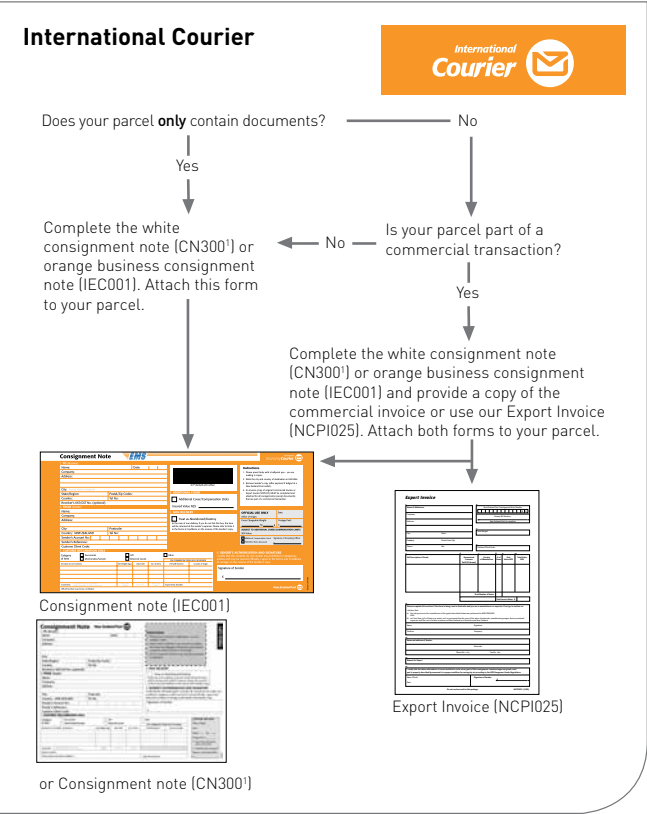
<sup>1</sup> Available instore only.



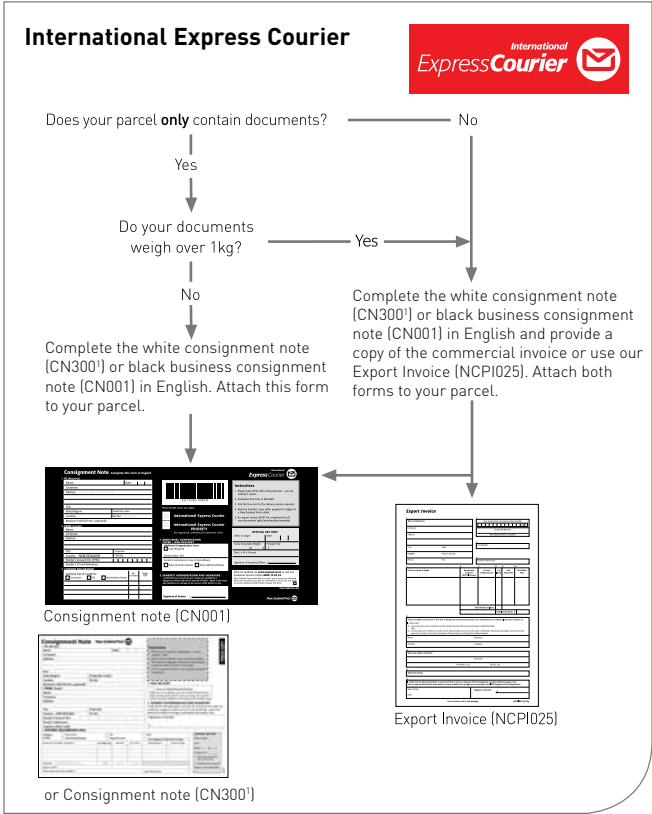
# Customs and consignment documentation

## International courier services

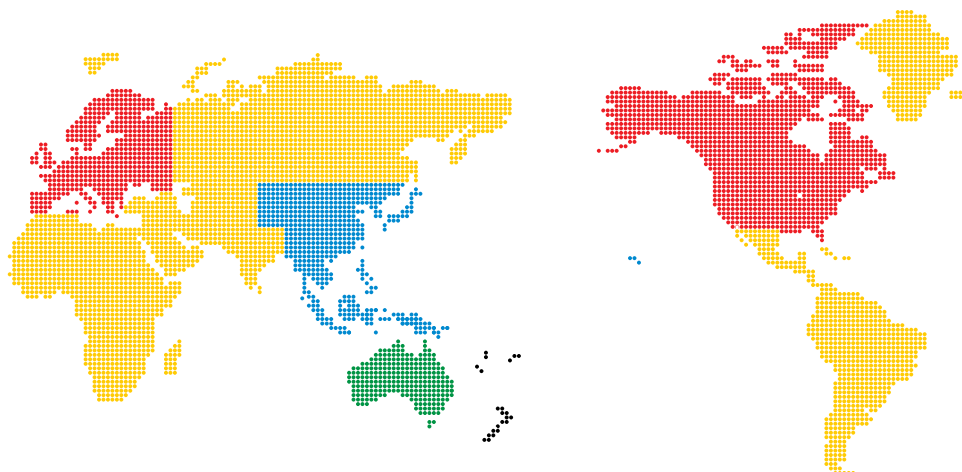
For parcels valued over NZ\$1,000, New Zealand Customs requires an export entry to be completed which New Zealand Post can complete on your behalf for an additional fee. Please call our Customs Clearance Broker on 0800 SEND IT (0800 73 63 48) for more information.



<sup>1</sup> Available instore only.



# World zones



## Australia Zone A

- \* Australia

## South Pacific Zone B

- American Samoa
- Cook Islands
- \* Fiji
- French Polynesia
- Kiribati
- Nauru
- New Caledonia
- Niue
- Norfolk Island
- \* Samoa
- Solomon Islands
- Tokelau
- \* Tonga
- Tuvalu
- \* Vanuatu
- Wallis and Futuna

## Asia Zone C

- Brunei Darussalam
- Cambodia
- \* China – People's Republic of
- Federated States of
- Micronesia
- Guam

- \* Hong Kong
- Indonesia
- \* Japan
- Korea – Democratic
- People's Republic
- of (North)
- \* Korea – Republic of (South)
- Lao People's Democratic
- Republic
- \* Macau
- \* Malaysia
- Marshall Islands
- Midway Island
- Myanmar
- Northern Mariana Islands
- Palau
- Papua New Guinea
- \* Philippines
- \* Singapore
- \* Taiwan
- \* Thailand
- Timor Leste
- \* Vietnam
- Wake Island

## North America, UK & Europe Zone D

- Alderney
- Andorra
- \* Austria
- \* Belgium
- Bosnia and Herzegovina
- Bulgaria
- \* Canada
- \* Croatia
- Cyprus
- \* Czech Republic
- \* Denmark
- Estonia
- Faroe Islands
- \* Finland
- \* France
- \* Germany
- Gibraltar
- \* Greece
- Guernsey
- Holy See (Vatican City State)
- \* Hungary
- Iceland
- \* Ireland
- Isle of Man
- \* Italy
- Jersey
- Latvia
- Liechtenstein
- Lithuania
- Luxembourg
- Macedonia
- Malta
- Monaco
- Montenegro
- \* Netherlands
- \* Norway
- \* Poland
- \* Portugal
- \* Romania
- San Marino
- Serbia
- Slovakia
- \* Slovenia
- \* Spain
- \* Sweden
- \* Switzerland
- United Kingdom
- \* United States of America

## Rest of the world Zone E

- Afghanistan
- Albania
- Algeria
- Angola
- Anguilla
- Antigua & Barbuda
- Argentina
- Armenia
- Aruba
- Azerbaijan
- Azores
- Bahamas
- Bahrain
- Bangladesh
- Barbados
- Belarus
- Belize
- Benin
- Bermuda
- Bhutan
- Bolivia
- Botswana
- \* Brazil
- British Indian
- Ocean Territory
- Burkina Faso
- Burundi
- Cameroon
- Canary Islands
- Cape Verde
- Cayman Islands
- Central African Republic
- Chad
- Chile
- Christmas Island
- Colombia
- Comoros
- Congo Democratic
- Republic (formerly Zaire)
- \* Costa Rica
- Côte d'Ivoire
- Cuba
- Djibouti
- Dominica
- Dominican Republic
- \* Ecuador
- Egypt
- \* El Salvador
- Equatorial Guinea
- Eritrea
- Ethiopia
- Falkland Islands
- French Guiana
- French Southern Territories
- Gabon
- Gambia
- Georgia
- Ghana
- Greenland
- Grenada
- Guadeloupe
- Guatemala
- Guinea Bissau
- Guinea
- Guyana
- Haiti
- Honduras
- India
- Iran
- Iraq
- Israel
- Jaica
- Jordan
- Kazakhstan
- Kenya
- Kuwait
- Kyrgyzstan
- Lebanon
- Lesotho
- Liberia
- Libya
- Madagascar
- Malawi
- Maldives
- Mali
- Martinique
- Mauritania
- Mauritius
- Mayotte
- \* Mexico
- Moldova
- Mongolia
- Montserrat
- Morocco
- Mozambique
- Namibia
- Nepal
- Netherlands Antilles
- Nicaragua
- Niger
- Nigeria
- Oman
- Pakistan
- Palestinian Territory,
- Occupied
- Panama Republic
- Paraguay
- Peru
- Pitcairn Island
- Puerto Rico
- Qatar
- Reunion
- Russian Federation
- Rwanda
- Saint Barthélemy
- Saint Helena
- Saint Kitts-Nevis
- Saint Lucia
- Saint Pierre & Miquelon
- Saint Vincent & Grenadines
- São Tomé & Príncipe
- Saudi Arabia
- Senegal
- Seychelles
- Sierra Leone
- Sint Eustatius
- Sint Maarten
- Somalia
- South Africa
- South Georgia
- South Sudan
- Sri Lanka
- Sudan
- Suriname
- Swaziland
- Syrian Arab Republic
- Tajikistan
- Tanzania
- Togo
- Trinidad & Tobago
- Tunisia
- Turkey
- Turks & Caicos Islands
- Turkmenistan
- Uganda
- Ukraine
- United Arab Emirates
- \* Uruguay
- Uzbekistan
- Venezuela
- Virgin Islands (British)
- Virgin Islands (USA)
- Yemen
- Zambia
- Zimbabwe

\* International Courier service available



## Contact us

For more information please visit our website [www.nzpost.co.nz](http://www.nzpost.co.nz), call our International Courier Support Centre on **0800 73 63 53** for international courier enquiries, our Customer Service Centre on **0800 501 501** for all other international enquiries, or visit your nearest PostShop or selected New Zealand Post retail outlets (excluding stamp resellers).

For information on sending oversized and overweight items internationally, visit our website [www.nzpost.co.nz/oversized](http://www.nzpost.co.nz/oversized) or contact our Customer Service Centre on **0800 501 501** to discuss international freight options.

## Opening a New Zealand Post Account

To find out what a New Zealand Post Account can mean for your business, please visit our website [www.nzpost.co.nz/businessaccount](http://www.nzpost.co.nz/businessaccount) or contact our New Business Team on **0800 276 7848**.

The standard terms and conditions of the products and services offered by New Zealand Post Limited, including information on the extent of our liability, are set out in the Public Contract and Postal Users' Guide. These are available for reference at PostShop stores and selected New Zealand Post Retail outlets, or can be viewed at [www.nzpost.co.nz/terms](http://www.nzpost.co.nz/terms). Other conditions for New Zealand Post Account customers are contained in the terms and conditions provided when credit was arranged. International Air, International Courier, International Express Courier, International Air Registered and PostShop are trade marks of New Zealand Post Limited.